

USPC Prep Guide D-1 2009



Name: _____



This prep outline has been prepared to help you cover the Horse Management aspects of the D1 Test. The riding aspects are listed for your information and you may want to check off the skills as you accomplish them; however, the region's Ratings Checklists are intended to be utilized for the riding portions of the test. The Horse Management area has plenty of space provided for you to fill in the answers. It is helpful for you to do this exercise because it not only gives you a great review format but it helps you organize your thoughts and put them on paper. This reinforces the knowledge and helps you verbalize your thoughts in the testing section. Please practice verbalizing your answers. Show your guide to your head instructor, DC and anyone else with horse knowledge because they will add bits and pieces of their experience and aspects that you may not have considered. The test will often ask for only a few of the multiple answers to the questions, but for this guide it is in your best interests to provide as many as you can. **** Please note that changes to the Standard of Proficiency for 2009 are in lowercase bold and italics. ****

RIDING TEST EXPECTATIONS

Candidate should ride in an enclosed area without lead line, demonstrating basic balanced position at the halt and walk, and control at the walk and trot.

RIDING ON THE FLAT

- ◆ Ride on flat using Riding Test Expectations.
- ◆ Mount and dismount, with assistance if necessary.
- ◆ Pick up and hold reins correctly at the halt.
- ◆ Shorten and lengthen reins correctly at the halt.
- ◆ Demonstrate basic correct position at the halt and walk.
- ◆ ***Drop and pick-up stirrups with feet while mounted at a halt***
- ◆ Ride at the walk and trot, with control, keeping mount on rail.
- ◆ Demonstrate simple change of direction at the walk and trot.
- ◆ Perform gradual transitions from walk to trot and walk to halt.

RIDING OVER FENCES

- ◆ Ride over fences using Riding Test Expectations.
 - ◆ Walk over poles on the ground in jumping position, demonstrating basic balanced position.
 - ◆ Discuss with Examiner the reason for different positions when riding on the flat and over fences.
-

HORSE MANAGEMENT EXPECTATIONS

The candidate is a beginning-level horse manager, willing to learn the simple routines necessary for safe handling of quiet, well-trained mounts. Knowledge will vary widely depending on age, educational level, and experience.

TURN-OUT

- ◆ Rider in safe and neat attire. (*Pony Club Pirt*)
- ◆ Mount neatly brushed; feet picked out (with assistance); showing farrier care.
- ◆ Tack safe and neat (properly adjusted with assistance if necessary).

- ♦ Tack up and untack mount, with assistance.
- ♦ ***Provide a copy of your mount's stall card***

List requirements of safe riding attire:

Describe how you clean your tack:

LEADING & LONGEING

Describe how to approach mount safely, put on halter, lead and turn correctly and safely

CONDITIONING

Describe one reason for cooling out mount after exercise:

NUTRITION

Describe how to give safely to your mount:

Water:

Grain:

Hay:

Tidbit:

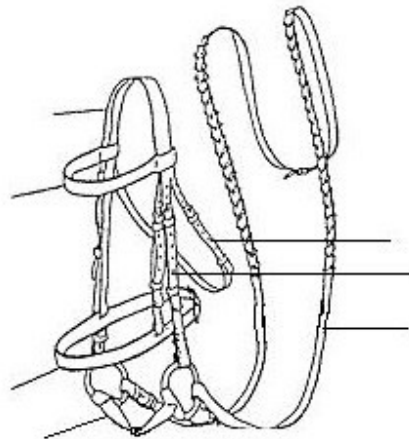
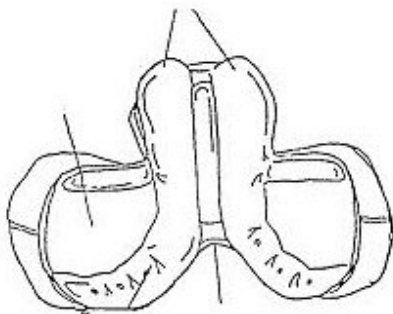
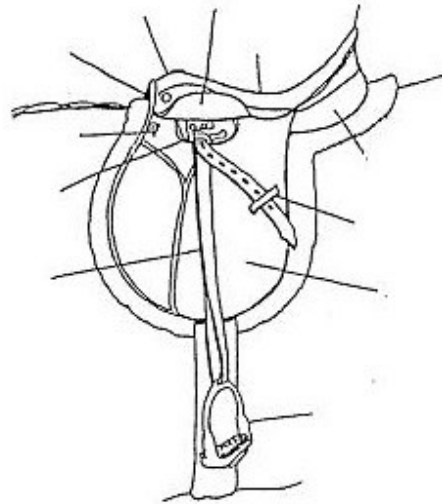
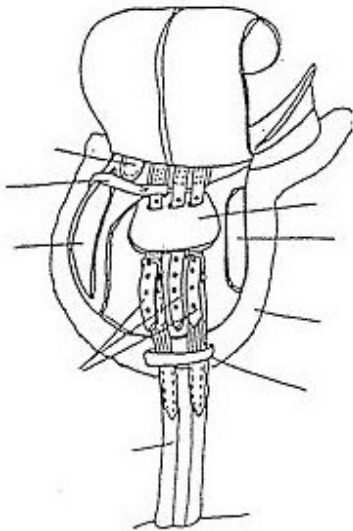
STABLE MANAGEMENT

Describe how to groom mount with brush and curry comb, pick out feet:

Give two reasons for cleaning tack.

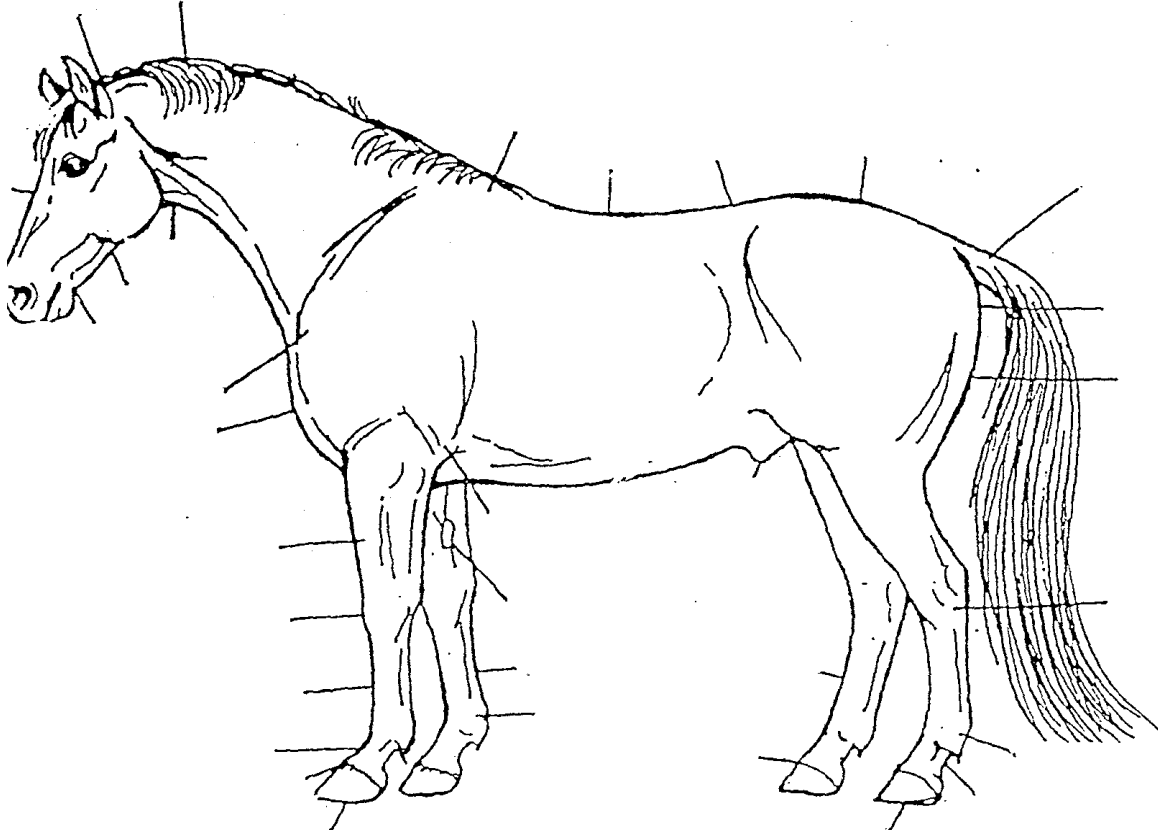
- 1.
- 2.

Name 10 parts of saddle and/or bridle:



PONY PARTS, CONFORMATION & LAMENESS

Name any 10 parts of the mount:



TRAVEL SAFETY

Give basic rules of safe riding in a group, in an enclosed area:

HEALTH CARE & VETERINARY KNOWLEDGE

Describe what a veterinarian is:

Give one reason the vet might treat your mount:

1.

LAND CONSERVATION

List three different places in your area where you see horse activities taking place, include where you have your Pony Club mounted meetings.

- 1.
- 2.
- 3.

FOOT & SHOEING

Give one reason to pick out feet:

- 1.

TEACHING

Not applicable. (See D-3 Teaching.)

RECORD BOOK

Not applicable.

BANDAGING

Not applicable.